

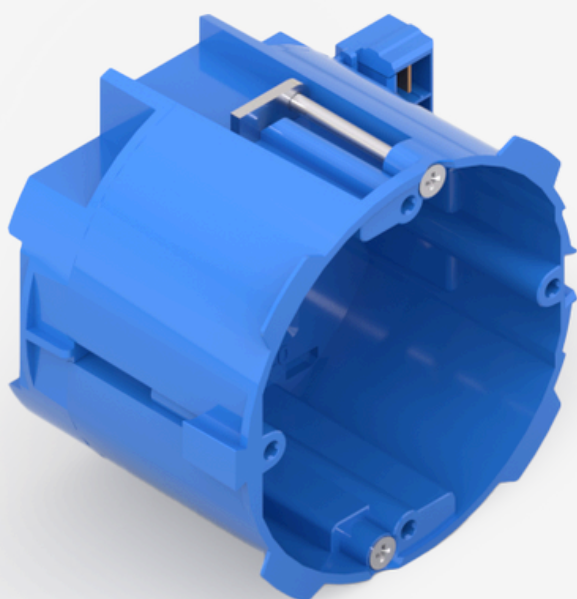
Installation box for hollow and concrete walls. Measurements according to the standard DIN 49073-1, for plate thickness 5-35mm. Standard distance between centers 71mm.

Thanks to a new locking mechanism, boxes can be connected with a click. Cable attachment with the first box only.

Boxes fit with all SCHUKO sockets. Special adapter necessary for connection.

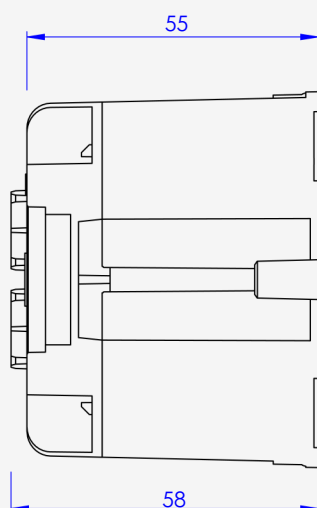
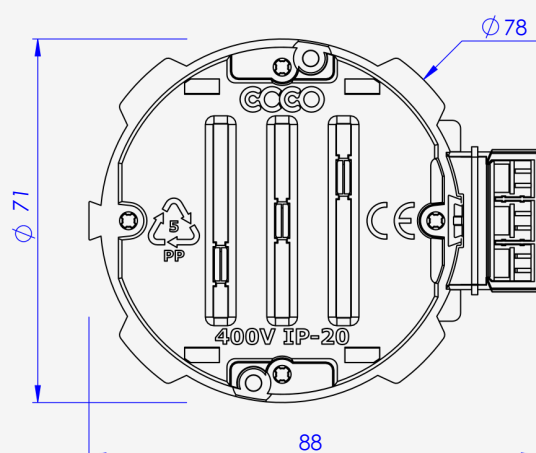
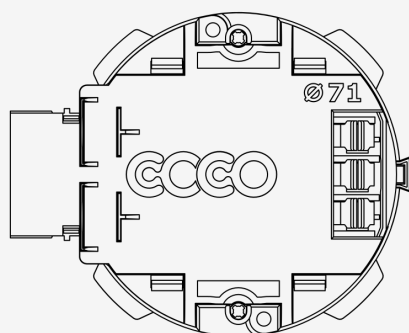


Main data



Product no	2024-C1
Type	HG 60 MW
Name 1	Installation box
Name 2	Hollow wall
Measurements	Ø71mm, H58mm
Color	blue
Material	polypropylene, copper
Material abbreviation	PP
Minimal Order Quantity	1pc
Weight	55g

Technical data



Height	58,00 mm
Ø	71 Max.
Diameter	71,00 mm
Inserts	None
Connection method	Via adapter
Model	Lone
Construction type	Installation box
Box attachment	Nuts
Dust cover	Sold separately
Milling diameter	73,00 mm
Flame retardant	according to VDE 0471/DIN 695 part 2-1, testing temperature 850°C
Form	Round
Floor height	39 mm
Fitting plate thickness	5,00 - 35,00 mm
Distance between screws	60,00 mm
Max wire cross-section area	2,50 mm ²
Screws	<input checked="" type="checkbox"/>
Cross-section area	1,50 - 2,50 mm ²
Shock proof	<input checked="" type="checkbox"/>
Protection class	IP20
Wind proof	<input checked="" type="checkbox"/>